

LIHNN Christmas Study Day

8th December 2021



Agenda

- 10:00-11:00am Welcome and top three presentations
- 11:00-11:15 Break
- 11:15-12:00 Minutes of mayhem and explain the quiz
- 12:00-13:30 Lunch, voting and quiz
- 13:30-14:15 Guest speakers – Lorna Dawson and Betty Doyle (Poetry Project) and the Manchester Poetry Library
- 14:15-14:30 Break
- 14:30-15:30 Awards and close



Presentations

The three finalists talk about their submissions



Getting into bed with urology



An embedded service



The Good Fairy



The Keen Newbie



Getting to grips with urology



Searches so far

- Transurethral resection of the bladder
- Botox, overactive bladder and obesity – this showed there was no evidence that this treatment doesn't work in obese people meaning urology staff can stuff botox into people to their hearts' content
- Flexible cystoscopy
- Transperineal biopsy
- Hormone treatments for prostate cancer

The waterworks watercooler

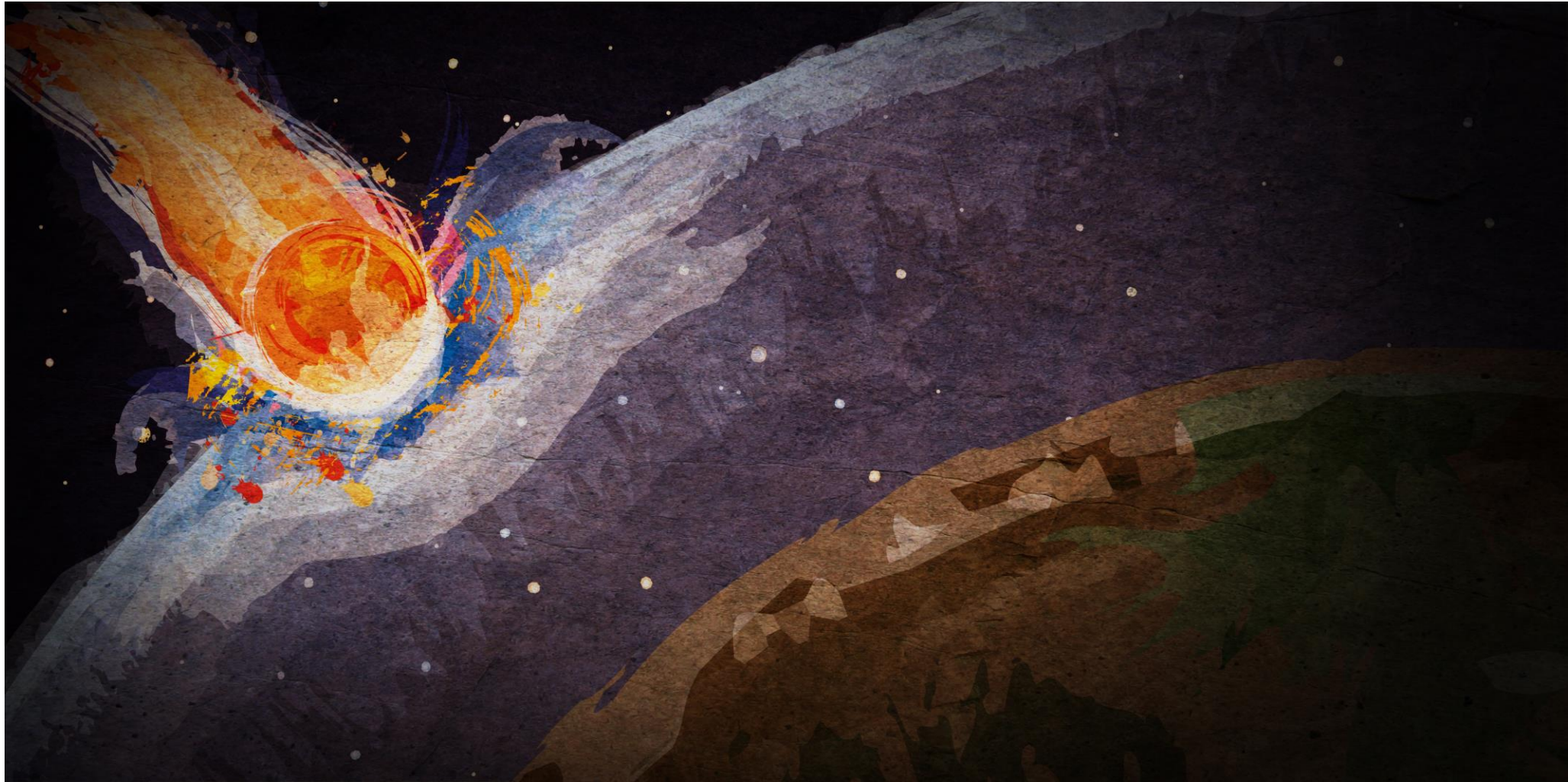


Happiness, happiness, the greatest gift that we possess



I'm loving the embedded librarian work, so much more that I thought it might be when you first told me about it! – Margaret Lyttle, Urology Consultant

The Impact



The Conference?





Creating awareness of information skills in ambulance services via journal publications

Matt Holland (LKS ASE) & **Michelle Dutton** (Manchester
University NHS Trust Library)



- LKS ASE has 36k potential users in eight ambulance trusts from Carlisle to Clacton-on-Sea
- Our aim:
 - to create awareness of information skills
 - raise the profile of LKS ASE
 - reach out to the wider paramedic and ambulance clinician community



- What we did:
 - Contacted the editor of the leading practice journal in paramedicine, the **Journal of Paramedic Practice** and pitched the first of three articles on sources and tools and techniques for searching
 - All three articles were published in 2021 and collated into a CPD module for the **Journal of Paramedic Practice** in September 2021
 - The articles were promoted through the LKS ASE Current Awareness Services and published in full text on amber – the home of ambulance service research

- Just for the record:

- Holland M., Dutton, M., & Glover S., (2021) Where to look: sources of research in paramedicine Journal of Paramedic Practice, 2021 13:8, 316-319. Available from: <https://doi.org/10.12968/jpar.2021.13.8.316>
- Holland M., Dutton, M., & Glover S., (2021) How it's done: search tools and techniques for major bibliographic databases. Journal of Paramedic Practice, 2021 13:5, 210-213. Available from: <https://doi.org/10.12968/jpar.2021.13.5.210> and <http://hdl.handle.net/20.500.12417/1183>
- Holland M., Dutton, M., & Glover S., (2021) Where to now? Searching beyond Medline. Journal of Paramedic Practice, 13:2, 81-83. Available from: <https://doi.org/10.12968/jpar.2021.13.2.81> and <http://hdl.handle.net/20.500.12417/983>



- What we learned:
 - about the publishing process, pitching our ideas, working with an editor and writing to their requirements and how fast you need to work to meet magazine deadlines
 - worked out how to structure the articles to cover the whole process of searching from choosing sources for searching to selecting tools and techniques
 - (Michelle) learned about the process of adding full text (accepted version) on amber. These are the first articles to be deposited on amber using Green Open access route (SherpaROMEEO)



- What were the outcomes:
 - contacted by a lecturer teaching BSc Paramedic Practice, thanking us for the articles which he used in teaching
 - articles downloaded c600 (589) times from Magonline
 - positive feedback from the LIS community, shared on LIS-Medical and HEE **Resource Discovery Digest** - featured in **Norther Lights** Issues 11!
 - form the basis of three online videos to go onto an online learning tool called **Para Pass** widely used by ambulance services
 - provides a resources for teachers and educator in ambulance services and higher education to share with students

Winter Book Promotion

Engaging the expertise of our library users in
acquisitions

What is the winter book promotion?

- Using the expertise of our users to inform acquisitions
- Making book recommendations accessible and encouraged
- Highlighting the requests made
- Increasing the reviews and star ratings on our catalogue

What is the winter book promotion

- One off promotion (now annual)
- Allow each user up to 3 book requests
- Set a spending limit and use a thermometer to show what is left of the budget
- Provide online and paper copies of the form
- Theme them seasonally to add a sense of fun





Library Wish List

Dear Keyll Darree
Library,

This year I've been very good and would like
to request a resource for everyone to
enjoy!

Could I please have:

Book title:

Author:

Why I would like it:

Thank you, Keyll Darree!

Love,

Name:

Email:

*P.S. Remember to review the
book once you read it so
everyone else can see how useful
it is!*

Your details

First name (s) *

Surname *

Contact Telephone Number *

Email address ?

Please confirm email address

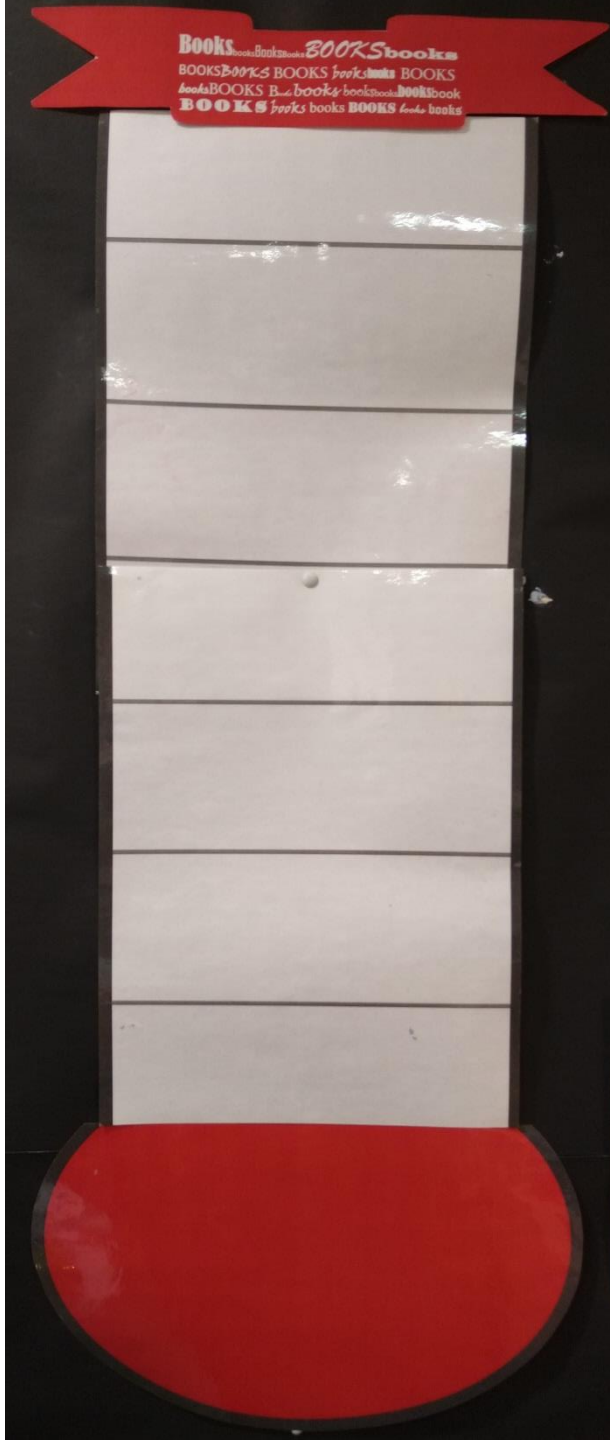
Suggested book (link to book online or title) *

Any other information (author, edition, date)

Reason for suggestion? *

Do you want to request another book? ?

☐



Keyll Darree Winter Promotion

"Using the specialist knowledge of our users to inform and build our collection"

As part of our Winter promotion we are purchasing user recommended health and social care books up to the value of £100 with maximum of three requests per user. All we ask in return is that you tell us why this book would be beneficial for the library, and provide a review if we choose to purchase it.

To request today, fill out a Book Request form either in the library or online.


Spend-o-meter!



Practical Points

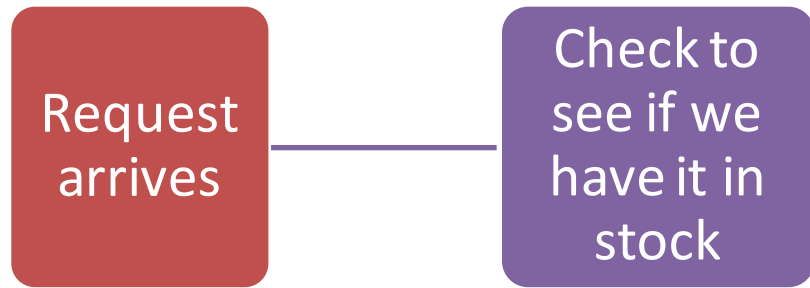
- We don't buy every book
- Submissions checked by manager
- Assessed for usefulness generally
- Advise ILL scheme if not useful for all
- Check for newer editions
- Buy second hand if in good condition

The route of a request

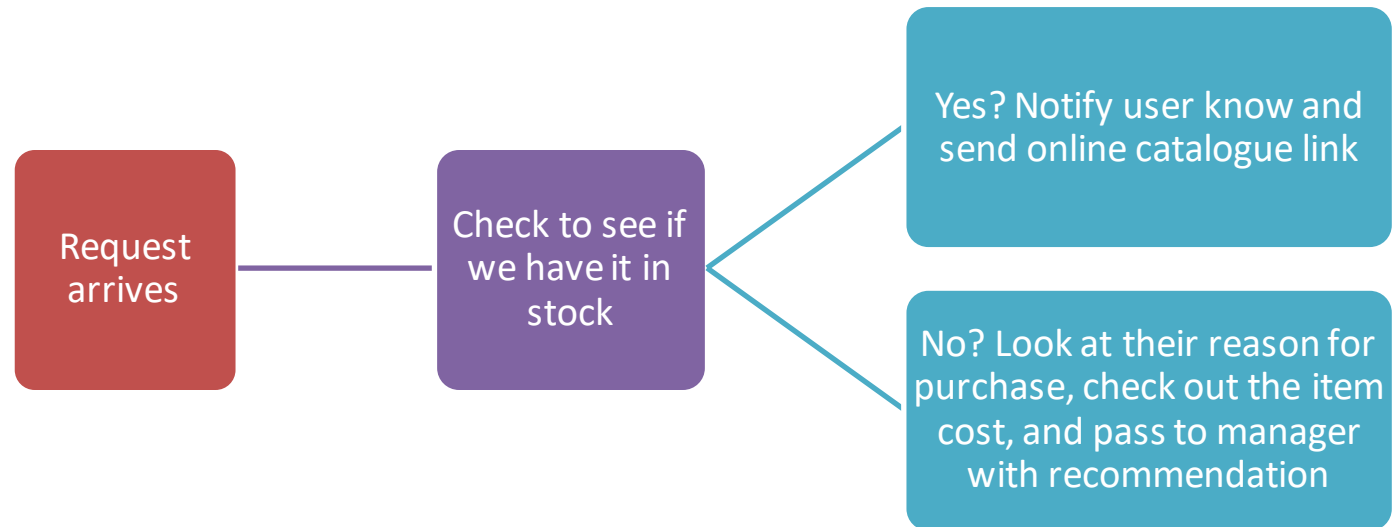


Request
arrives

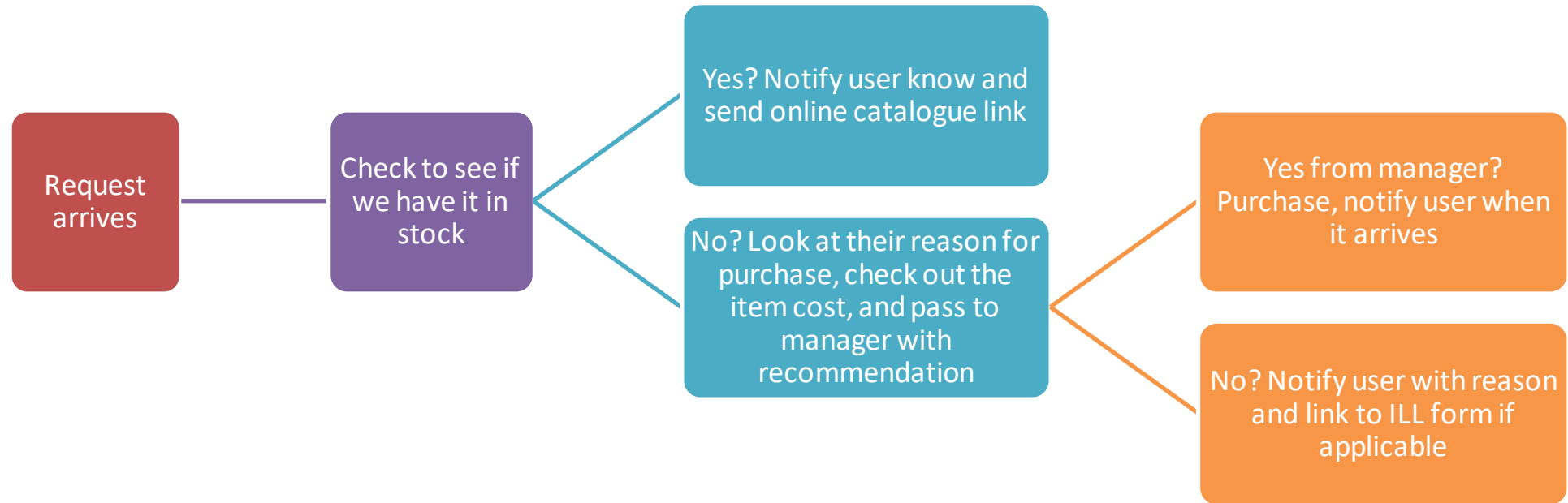
The route of a request



The route of a request



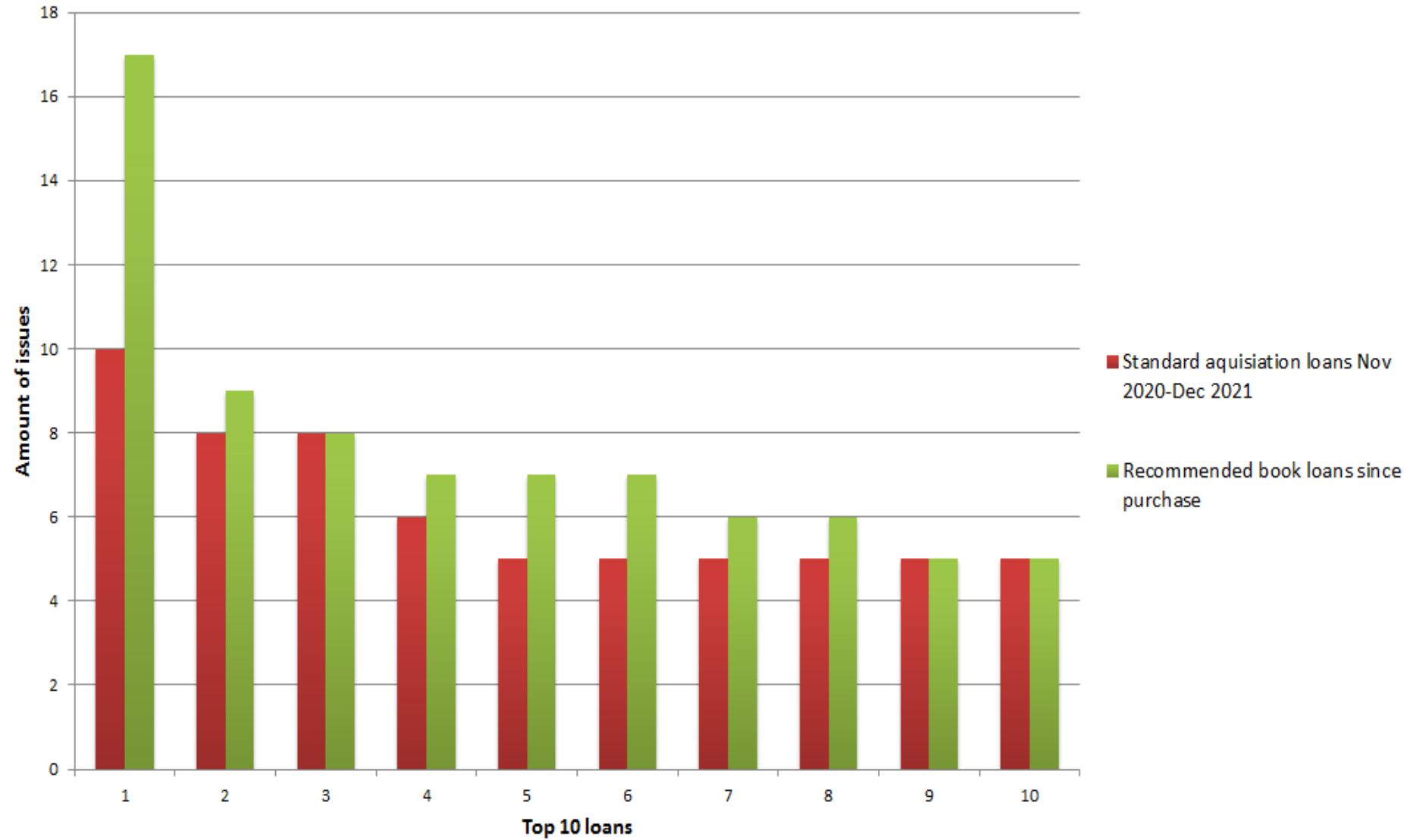
The route of a request



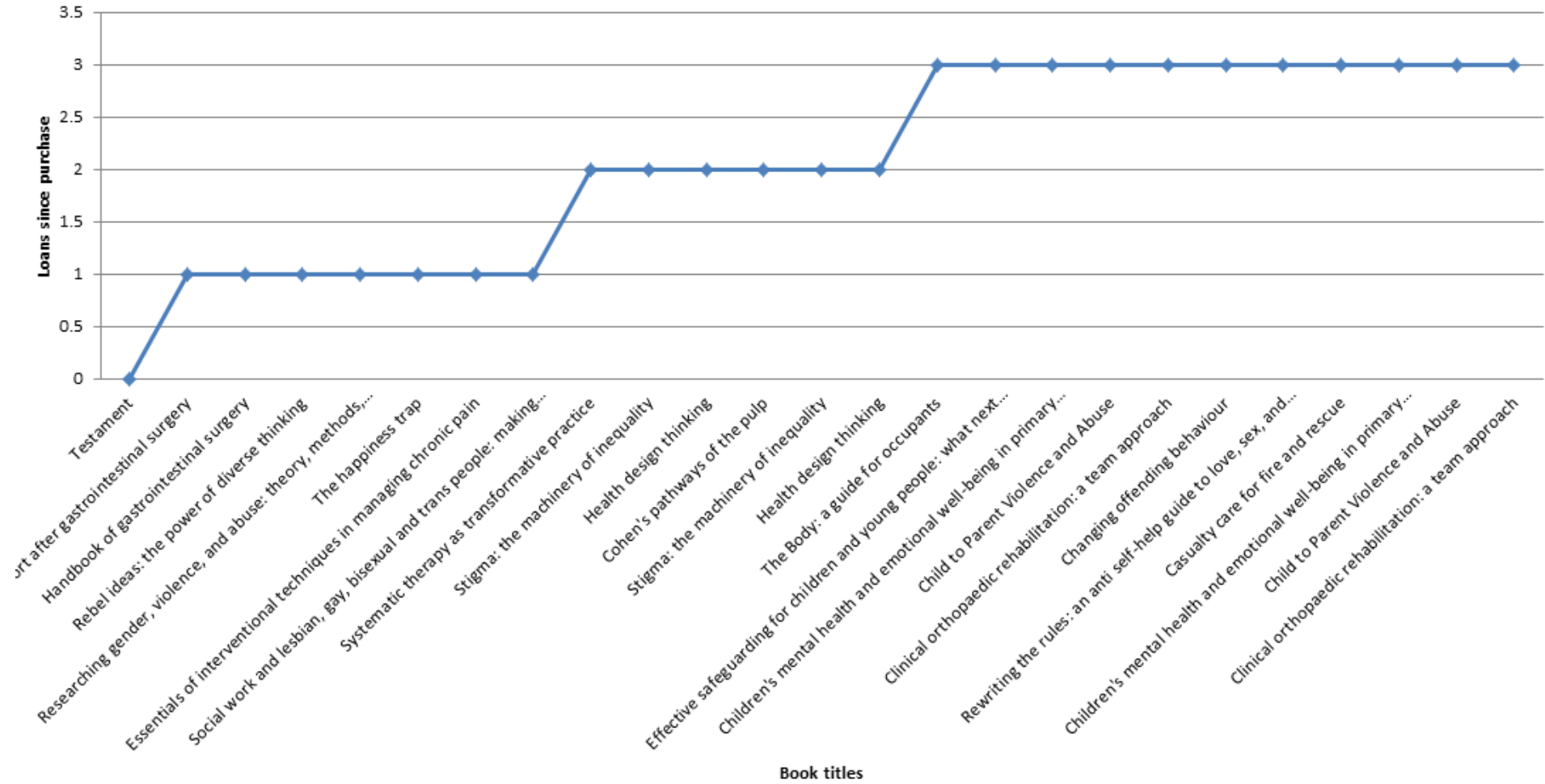
Was it worth it?

- Book recommendations increased
- Expanded our stock
- Received recommendations from a range of users
- Increased the reviews and star ratings on our catalogue

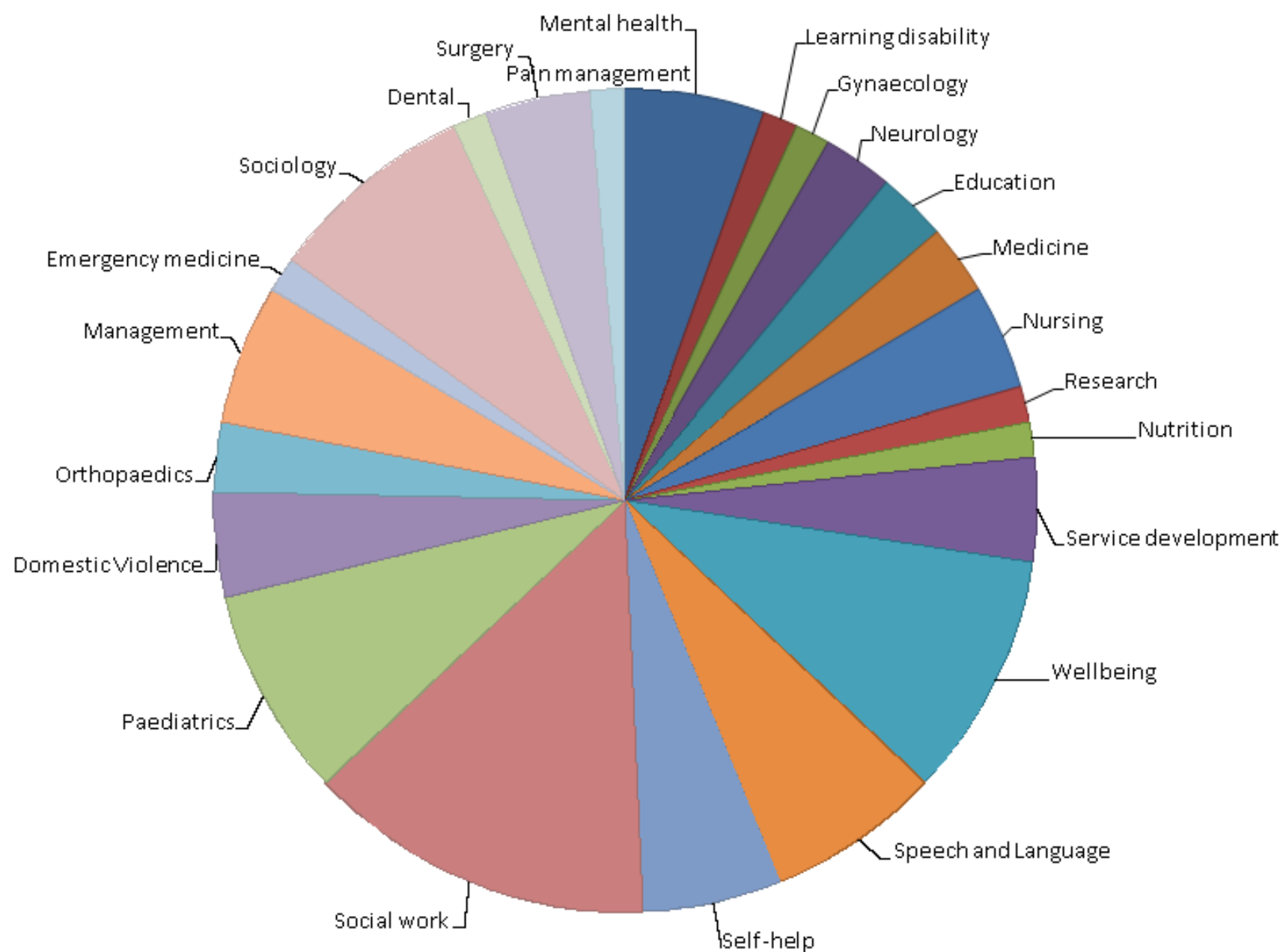
Top 10 book loans November 2020 - December 2021



Least loaned recommendations



Recommendations by subject



Recommendation Reasons

- “This book... is useful for supporting families to feed their children. I feel it would be useful for the speech and language therapy team, the dietetic team and also health visitors.”
- “Helpful clear resource when discussing a diagnosis with parents”
- “We have an increasing number of children who due to trauma are displaying violent and abusive behaviours towards parents and carers. This book has been recommended by Community Care as a useful tool and important reading for social workers who are working with children.”
- “the book uplift the mood of people especially during pandemic and useful for people who are going through during difficult times”
- “This book would benefit a large number of physiotherapists employed across the DHSC that work in both outpatient and inpatient settings with orthopaedic patients requiring rehabilitation. “

2021's Winter Promotion

- 7 requests
- 6 to be purchased

Tour time!

Any questions?



Break

Grab a cuppa and mince pie - back at 11:15





Minutes of Mayhem

Three minutes...your time starts now

Knowledge and library services: Supporting NMAHPS research in Bolton

Bolton NHS Foundation Trust

KLS Embedded Evidence and Knowledge Specialist Pilot

Dec 2021

Contact us:

library@boltonft.nhs.uk

01204 390935

@LibraryBolton

... for a **better** Bolton

Embedded Evidence and Knowledge Specialist Pilot Project .

- April -21 working with NMAHP Research Forum, Bolton FT KLS embedded role trial.
- Test the benefits of an EKS aligned to a specialty or departmental group
- Vision element: excellence- Try new things, learn new skills and take action without fear of failure and other people's reactions.

What we did?

- Clinical Librarian seconded 0.4WTE to an embedded role pilot.

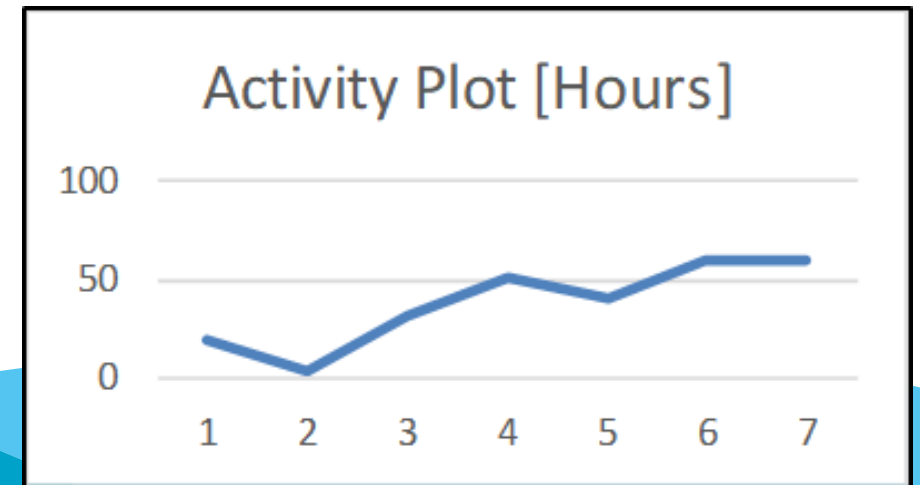
Why did we do this?

- Research shows a lack of skills, knowledge and confidence prevents research engagement and writing for publication by NMAHP staff groups

...for a **better** Bolton

What happened?

- Slow start but embedded offer reached capacity at month 5.
- Evidence search requests & KLS engagement increased for majority of this staff group.
- Attended meetings, presented at research sessions and invited to attend and present at local NMAHP Research Conference (virtual)
- Data identified need to re-engage nurses



Unexpected Bonus

- Made contact with community staff previously not well served or aware of our services- podiatrists, homeless team etc.
- Gained a more in-depth understanding of our organizations' research department and the work it undertakes.
- Working with the forum highlighted areas where we could improve our own service.

What was the conclusion?

- Positive feedback from forum members & Director of Allied Health Professionals
- Increased engagement with staff considering or undertaking research
- Identified need to support writing for publication- taught sessions planned for 2022
- Need for current awareness- at capacity so a targeted automated system such as Knowledgshare could be a solution



Mid Cheshire Hospitals
NHS Foundation Trust

Be Prepared!

How knowledge & library services can
support large scale simulation

“The library team have a wealth of knowledge and are happy to be 'dropped in' to scenario based exercises or to facilitate exercises. Their knowledge gives them a confidence and the calm environment they work in leads to calmer temperaments suited to emergency preparedness support.” Brian McMillan, Service Manager - Emergency Planning and Site Operations

Susan Smith: Library Manager

8th Dec 2021

Because you ♥ Matter

Exercise Sykes

Literature search

Communication methods between Command & Control and scene (not rely on phone, use radio, what about cameras)

Literature search

Reducing the lag in support as we call people in (say a disaster has



Mid Cheshire Hospitals
NHS Foundation Trust

Structural-Safety
SCOSS and CROSS



SCOSS
Standing Committee on Structural Safety

SCOSS Alert | May 2019

FAILURE OF REINFORCED AUTOCLAVED AERATED CONCRETE (RAAC) PLANKS

In late 2018, the Local Government Association (LGA) and the Department for Education (DfE) contacted all school building owners to draw attention to a recent failure involving a flat roof constructed using Reinforced Autoclaved Aerated Concrete (RAAC) planks. There was little warning of the sudden collapse.

Although the failure was in a school, it is believed that RAAC planks are present in many types of buildings. This Alert is to emphasise the potential risks from such construction, most of which dates back to between the 1960-80s. Although called "concrete", it is very different from traditional concrete and, because of the way in which it was made, much weaker. The useful life of such planks has been estimated to be around 30 years.

Pre-1980 RAAC planks are now past their expected service life and it is recommended that consideration is given to their replacement.

1. Who should read this Alert?

Owners of schools and similar buildings dating from the 1960-80s with flat roofs. Government Departments and Local Authorities who have schools and similar buildings in their asset portfolios. National Health Trusts, Dioceses/Parishes, building surveyors, architects, structural engineers, facilities managers and maintenance organisations may also be interested.

2. Background

In the 1960s there were many instances of failure of RAAC roof planks installed during the mid-1960s and a large proportion of such installations were subsequently demolished. Several case studies revealed some primary deficiencies e.g. incorrect cover to the tension steel, high span-to-depth ratio, insufficient provision of crossbars for providing anchorage for the longitudinal steel, failure in performance of roof membrane and rapid worsening of local corrosion of steel.



Figure 1
The 2018 roof slab collapse

SCOSS

Visit www.structural-safety.org EMAIL scoss@structural-safety.org



Utilising Microsoft Teams



T Attendees

Group	Area / team	Names	Accepted	Notes
N/A	Exercise Facilitator	Neil Furness		Located in Jet Library, IT room
N/A	Exercise support	Susan Smith		
3		Brian McMillan		

Groups – set up in teams

The Main group – all participants

- (1) Estates – Group Facilitator = Les Jackson
- (2) Command and Control – Group Facilitator = Brian McMillan
- (3) Operations – Group Facilitator = Emma Colgan
- (4) Emergency Services / Other Support – Group Facilitator = Jim Deacon, NHS E & I

- 1. Cheshire Fire & Rescue
- 2. Cheshire Police
- 3. Cheshire CCG
- 4. NWAS
- 5. NHS E & I Emergency Planning team and Communications team

This was an important exercise to run due to the risk posed by the structural problems, so thank you for ensuring it goes ahead and we can learn from it. We feel that NWAS can contribute hugely to reducing the pressures on the hospital, through deflecting patients and utilising PTS to help you free up bed / ward space. The sooner a multi-agency response is stood up the more we can help. We don't think this came across in the exercise. I would like to see further exercises looking at detail to that initial call to the Fire service, and a template created to ensure that it garners the quickest multi-agency response we can give you based on the risks present. I would also like to see exercises using parts of the hospital which are more difficult to access or have greater impacts on places like ED or impacting your BC which would be interesting / really test the plan. I also think there is also value in setting emergency service RVPs and command points in advance for the type of incident. We will be updating our plans as a result of this exercise so it was worth while our attendance. (sorry for the long essay Neil & Team!)

Teams process worked well, particularly when breaking off into subgroups. The only hinderance was not being able to liaise openly with the other groups. The time went quickly, but the teams process helped keep us to time. Thank you.

Great use of IT and chairing of exercise and facilitators Great collaborative working


Exercise planning, facilitation and debrief with next steps evidence searches

Because you Matter

Resilience Direct

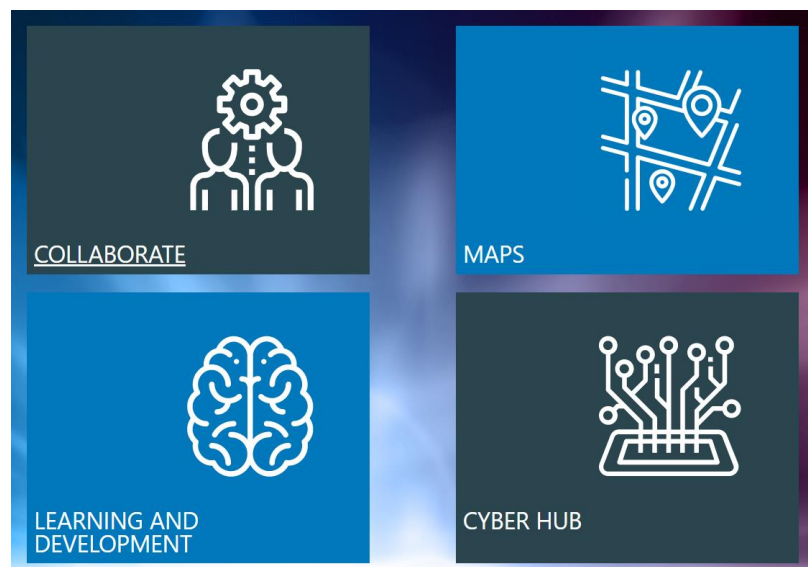
RAAC plank response documents











Large documents may take a few minutes to download. Please be patient and only click on the link once. When your file is ready it will appear in your download folder.

Type	Name	Protective Marking
	MCHFT RAAC Immediate Response Plan v1.0.docx (5.94MB)	Official

Child Pages

- Exercise SYKES
RAAC failure exercise



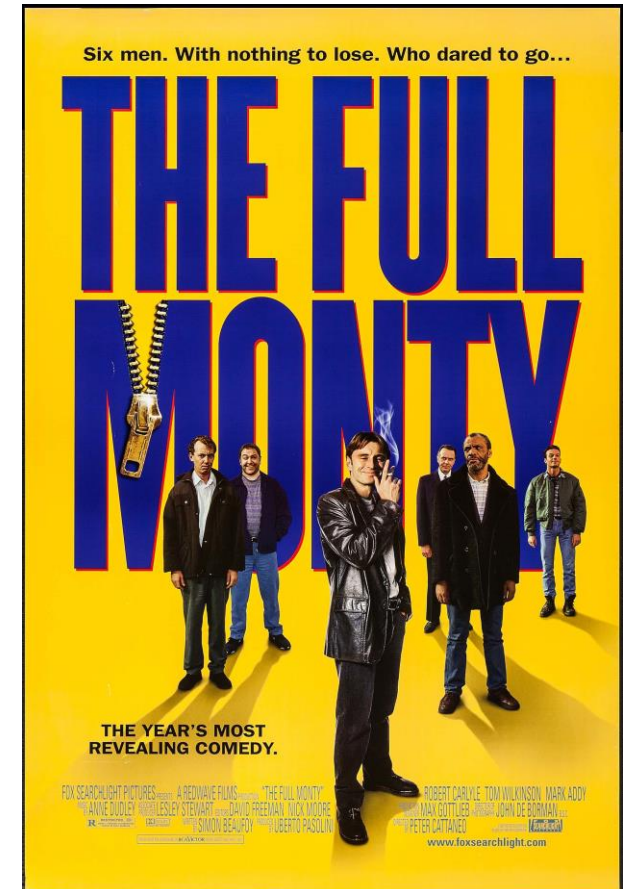
	Background reading Repository		Business Continuity Plans Community
	Central Cheshire Integrated Care Partnership Repository		Debriefs and Events Repository
	Elmhurst response documents Repository		Emergency Plans and response documents Community
	Internal, External and other emerg contacts Repository		RAAC plank response documents Repository
	Senior Manager on Call Repository		Victoria Infirmary response documents Repository

Exercise Monty

Exercise AIMS

- To look at the return of services to pre-COVID levels and an anticipated footfall within the Outpatient Departments at Leighton and VIN
- To build a reactive plan that safely accommodates patients and staff within the hospital environment whilst adhering to COVID IPC guidance
- To identify design solutions that would not impact on service delivery or patient safety
- Map interdependencies and communication channels

“Emergency Preparedness can be an isolated role and there can be a lack of engagement from stakeholders and staff due to the complexity and time pressures involved. I have found that the library team (Susan) is always willing to assist and facilitate. It is good to have a dedicated IT suite that can be used for training and exercise coordination and it has become my go to venue.”



Future Work

Hololens

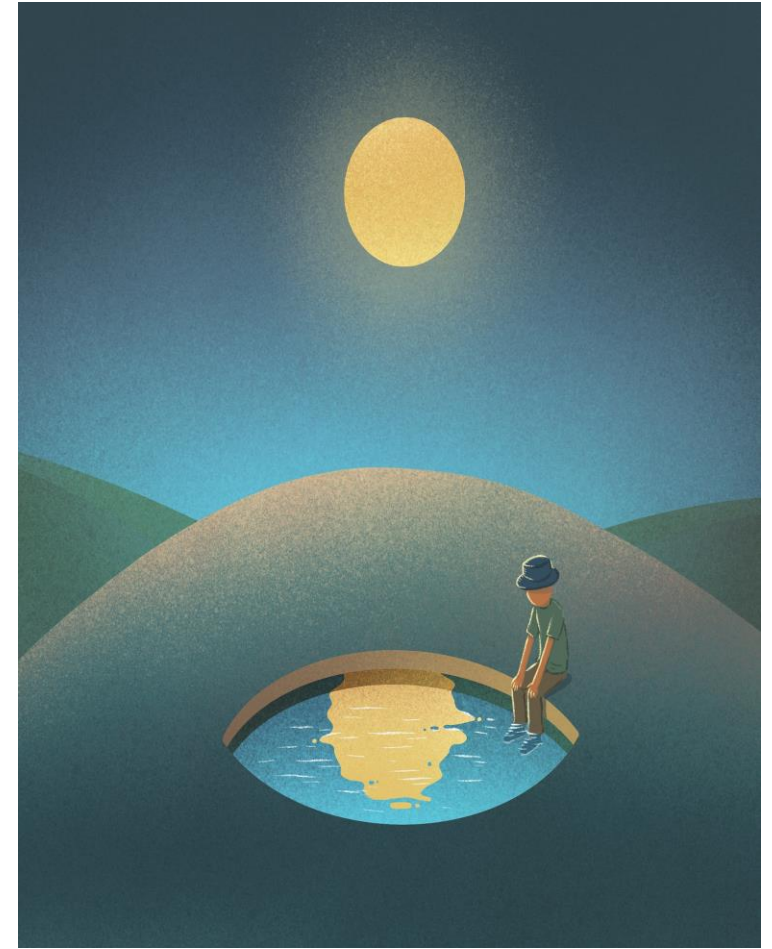
“We have more projects for the future, notably the mixed reality training delivery. That would put us at the forefront of Emergency Preparedness exercise delivery regionally and possibly nationally. The equipment is in place and funding partners have been located, it is about getting the IT support right. Once that is in place, a collaborative new project will commence. The impact to the Trust is that every on call senior manager, Executive or Operational role holder will have bespoke interactive training and exercising on a level not currently experienced. They will each have the opportunity to experience multiple major incidents in 1 to 1 coaching sessions which isn't currently possible and takes decades to gather that kind of experience.”



Key Lessons

Personal reflection

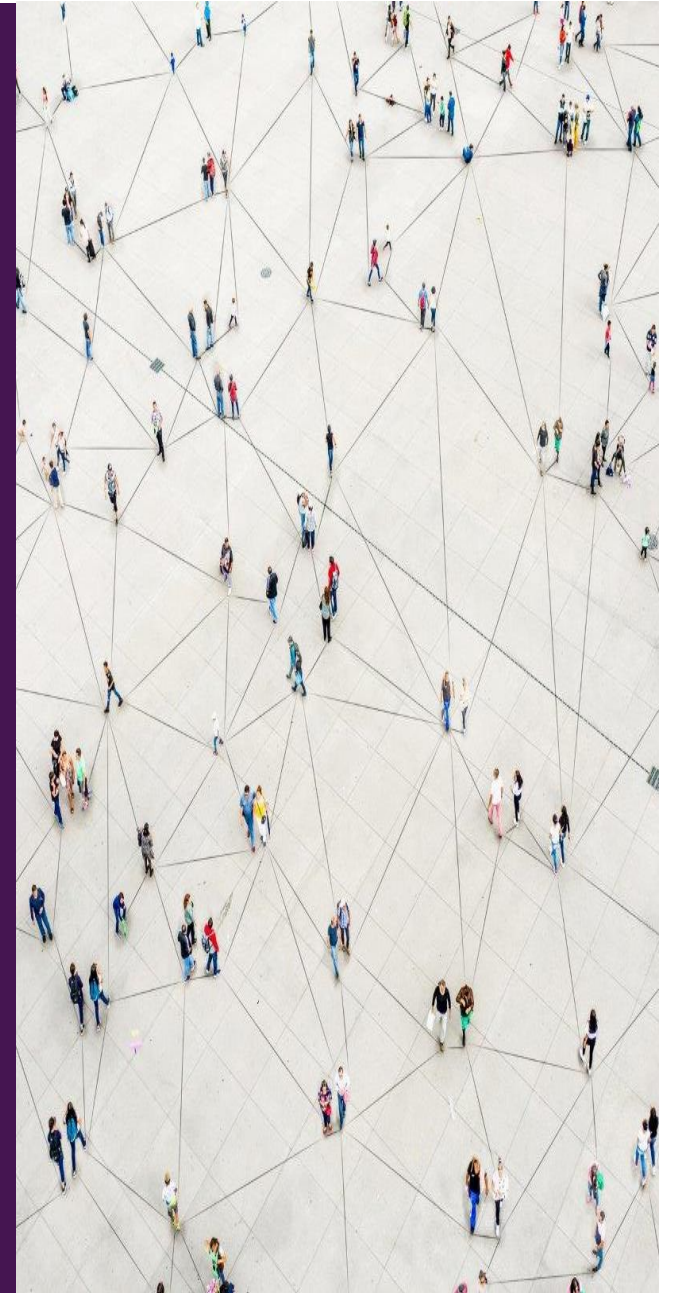
- Great way to raise library profile, both internally and externally
- Not everyone has the skill set to act in an emergency
- Patients always come first
- Don't fight the scenario – go with an open mind and not just to defend your case
- It's OK to ask to be included and your opinions are valid
- Supports own personal resilience
- Before action reviews and search to support the scenario and prep facilitators, key searches arise from the hot debrief
- Online is just as effective as in person, but everyone prefers to network
- HEE merger with NHS E&I makes a lot of sense



How Information Services at NICE keep up to date with new developments

Jenny Craven
Information Specialist, NICE
Jenny.craven@nice.org.uk

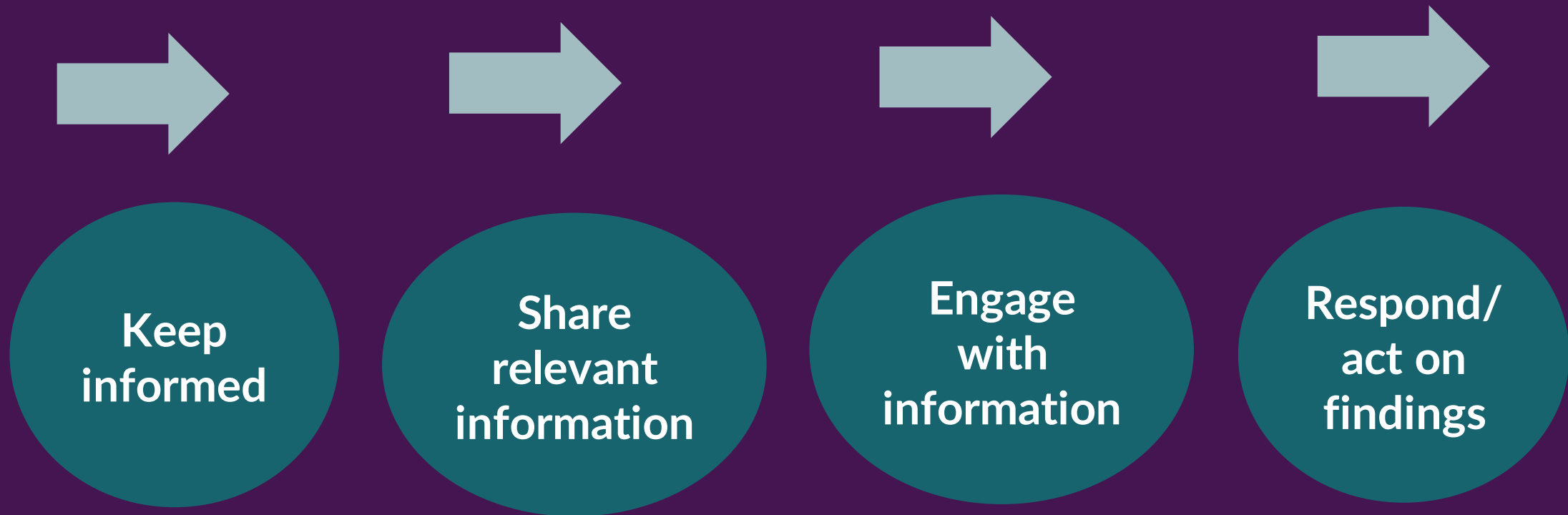
NICE National Institute for
Health and Care Excellence



NICE Information Services

- Provide information to inform and support the programmes at NICE
- Team of 30 information specialist staff
- Based in Manchester and London
- Most have flexible working arrangements
- Communicate and share information with each other in various ways
- Covid has seen a lot of changes in the ways we communicate with each other!

In order to remain a relevant and dynamic team, we need to:



NICE

What we are doing already....

IS current
awareness
bulletin

IS team
technical
forums

Presentations
at team
meetings

Ad hoc
emails

Skills
sharing

Informal
discussions

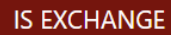


How do we keep track of *and act on* the less formal methods of keeping up to date?

KUTD in Yammer



NICE



 Search

IS EXCHANGE GROUPS

IS Exchange - Keeping Up T...

Test group

All Network

- + Create a group

 [Discover more groups](#)

PRIVATE MESSAGES

Jemma Deane

Rachel Adams

Anna Macbeth

Ruth Frankish

Ruth Frankish

+ Create a message



Providing up-to-date information relating to the work of information specialists

NEW CONVERSATIONS

ALL CONVERSATIONS

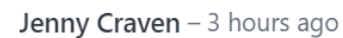
FILES

 SEARCH

✓ **Joined**

 Update
 Question
 Poll
 Praise
 Announcement

Share something with this group...



Journal Club at October Information Services Technical Forum

We had an interesting discussion at the Journal Club - which Elizabeth and I ran after the October ISTF.

The article we discussed was:

Cooper C, Court R, Kotas E, Schauburger U. [A technical review of three clinical trials register resources indicates where improvements to the search interfaces are needed.](#) Res Syn Meth. 2021;12:384–393. <https://doi.org/10.1002/jrsm.1477>

Delawareans are encouraged to discuss the information provided in this document with their physician.

MEMBERS (31)



INFO

[Edit](#)

All Updates should have at least one Topic tagged for the **Content** and the **Source** - find definitions for Topics in the **Guide to Topics** (follow the link from Network Resources below).

CONTENT

Database Selection

Keeping Up to Date in Yammer – what it does

- Keep the team informed of new methods, developments, tools, research relevant to our work
- A process to share findings amongst the team,
- Involves everyone
- Able to retrieve relevant findings when we need them
- We can respond to and act on findings when appropriate.

NICE

To date, Keeping Up to Date in Yammer has:

- Generated 208 posts since its launch in 2020
- 147 comments on posts
- Posts discussing journal articles generated the most interest
- Our top post received 12 comments
- “Adds value” to posts, through team discussions and to inform decisions

NICE

Who has been involved in KUTD:

Project team

Ruth Frankish
Jenny Craven
Paul Levay
Elizabeth Barrett
Rachel Adams
Anna Macbeth
Andrea Heath
Dave Nicholls
Jemma Deane
Ceri Williams

Steering Group

Monica Casey
Jenny Craven
Jenny Kendrick
Ceri Williams

Team involvement
Everyone!!

NICE

Thank you, any questions?

Lunch

Make sure to vote for your winner and have a go
at the quiz - back at 13:30 for guest speakers





Quiz answers





Guest speakers

Lorna Dawson and Betty Doyle – Poetry Project
The Manchester Poetry Library

Poetry in Health Libraries

LORNA DAWSON – GREATER MANCHESTER MENTAL HEALTH

BETTY DOYLE – MANCHESTER METROPOLITAN UNIVERSITY

Members of the team

- Lorna Dawson – Greater Manchester Mental Health NHS Foundation Trust
- Betty Doyle – Manchester Metropolitan University, poet and PhD Student
- Andrew McMillan – Manchester Metropolitan University, poet and lecturer
- Martin Kratz – Manchester Poetry Library, Project Manager
- Geoff Walton – Manchester Metropolitan University, Information & Communications

Why this study?

- Geoff: characterising the engagement with poetry as an information problem because it is well-known that when people encounter information it involves emotional as well as cognitive processes.
- Martin: noting the 'poetry anxiety' phenomenon amongst people he had talked to yet, conversely, poetry is noted as having positive effects on well-being
- Ran a break out session for the youth library group conference, where librarians described that some of their most popular books were poetry (verse novels) but they shelved them under fiction.
- Andrew: trying to nail down whether anecdotal or colloquial evidence around a poetry anxiety was true, and whether getting people to write their own poetry was able to help people get over this

What we did

- Invited health library staff from across the North to participate in 2 two-hour sessions of writing workshops for free
- Bribed them with gift hampers from Betty's Tea Rooms!
- Planned writing exercises that would be both enjoyable and accessible.
- Picked exercises that could be easily adapted within the participant's own libraries, for a range of patients, and exercises that were also approachable for those who had never written poetry before.

How does
poetry make
you feel?

Interested, intrigued, curious but
also a little intimidated.

Comfort – Reflective – resentful
– aggrieved – happy – sad

Poetry makes me feel happy, sad
and makes me think about what
it says to me in the moment.

If you could ask poetry a question, what would it be?

Why are you
sometimes hard to
understand?

Are you happy
people interpret
you in multiple
ways?

What's your
secret?

What type of music would poetry be?

Reggae - something about the beat of the poems.

Sometimes as mundane as elevator music – other times like rock music or classical music.

I think it would be something immersive rather than 'background' music.

If poetry was a flower,
what would it be?

Skull cap: Pretty, multiflowered, can sound a bit intriguing or sinister.

For creating poetry, perhaps a peony as it can take a while to come out and can be sporadic ... or could be a daisy weed if you have a habit of jotting ideas down - they spread and inform patches... maybe they create a garden of the mind!

Exercises

Free-writing
exercise using a
nearby prompt

Golden shovel
writing exercise,
using John Challis'
poem 'North'

Return to the free-
writing exercise,
turning it into a
poem

Free-writing poem
exercise

List poem writing
exercise

Erasure poetry
with supplied
prompts

Why these exercises?

Slowly build in level of difficulty, encouraging participants and not immediately 'throwing them in the deep end'

Accessible to people who have never written before

Exercises picked that use other poems as their basis, to provide a framework for the participants while allowing them to write freely and creatively

Easily adaptable for all age groups and ranges of writing experience

Return to previous exercises, to show how far and fast their skills and confidence have developed

Free-writing

By Rachel Steele

There are deep, firm lines edged into his brow

How they got there, he knows not know

The strain is evident in his face

No matter what the time or place

It was of course impossible to hide

Even if he put the thought aside

Some things are too big for us to bear

Even though we really care

He hasn't told his wife as yet

The thought of that is deepest dread

But worry doesn't help at all

So try to keep steady, despite the fall

All we can do in life is our best

And that's it, despite the rest

North

Imagine it not as a point to reach – for all ways
are equal to the compass – nor as a place,
since there is always north of north – go far enough
you'll find yourself back where you began –
but as the sense of moving forwards, going up,
going heavenwards, through the cold
and through the clouds, the ultimate ascent towards
whatever keeps you up, be it fame or love

or hunger to know what's around the corner,
up the street or at the border: what matters

most is keeping north, and keeping north inside.

Slamming doors, stomping feet, she cries what?

The look, the cost, the impression is what matters

Wobbling heels and smeared lipstick, she does not see what is most

Needed is memories of youth, validation of place; is

Warmth and love. With boundaries keeping

Heart and soul pointing North

She will follow her own path And

With perilous diversion and wondrous adventures keeping

True to her own compass North

Till she discovers who she is inside

Golden shovel, by Susan Smith

prompt : What is the impact of Covid-19 on Childbirth?

I've wondered this as I carry my first, entombed and approaching his birth.

I've kept to myself but with a growing circle,

Threads thickening, tying me up in knots

Building a wall between forced familiarity and intention.

What is the impact on exposing my Russian doll self

to those outside? The hyper hygienic? The knowledgeable ones?

I have all I need from my family

And a growing family who need to know

Free-writing poem

BY SIOBHAN LINSEY



Trigger Warning

THE NEXT POEM IS ON THE SUBJECT OF
CHILD BEREAVEMENT

Exploring your memory box, let's see
Your 'wee bonnet' as grandad would have called it
Your tiny identity wrist and ankle bands
Your hand and footprints
Snapshots of our short time together
You – a perfect wee parcel of joy and hope
Mummy – her adoring heart - hurt and broken
Daddy – lost and confused amidst expectation and reality
Granddad – promised he was okay but broke down in tears
Nanna – all memories of her own loss came rushing forth, now two lost babies
Uncle – lost for words, how does one comfort
And yet you – so serene and so peaceful, so sweet and delicate
Your innocence all gently cradled in the nest of your mother's arms

List Poem, by David Cleland

Eggs

Important folklore

Myths

Jesus Christ

Hard-boiled adults often hide

The culture

Together

Dancing

Feast

Fountain

Falling.

Houses, cars people.

Capable

Damaging

Very messy when broken.

Erasure poem,
by Martyn
Greenwood

Feedback

The workshops 'demystified poetry'

Knowing about poetry and its terms is no longer seen as a barrier to writing poetry

Poetry now appears to be versatile

Made participants feel connected

Made participants feel intrigued Rachel

The workshops had shown participants poetry is liberating

The workshops had alleviated his concerns that poetry was beyond him.

Post-workshops

Sally participated in a poetry competition at her hospital, says these workshops inspired her

Martyn joined a monthly poetry group with other librarians


Susan put us forward to take part in this study day, and asked if we could come and deliver our sessions at her library

Participants' blog posts

Rachel: Like (I suspect) many people, the word poetry fills me with anxiety and takes me back to excruciating English lessons at school [...] All this helped to effectively dispel the myth that poetry is inaccessible and obtuse and not for the average person. Anyone can write poetry (and it doesn't have to rhyme!). I'm very grateful that I arrived at this conclusion (with the facilitators' help) and I would encourage others to engage with poetry in their work and personal lives.



Martyn: I found myself more cheerful after the workshop and I'm sure this was due to the satisfaction of having undertaken the writing exercises and feeling creative.



Sally: As the workshops began, I was hesitant [...] For me, the workshops became a liberating and cathartic experience, helping me to question my own preconceptions of what poetry can offer.

Blog posts by participants

<https://www.lksnorth.nhs.uk/blog/posts/poetry-in-health-libraries-workshops-a-collective-response/>

<https://www.lksnorth.nhs.uk/blog/posts/liberation-and-creativity-through-poetry/>

<https://www.lksnorth.nhs.uk/blog/posts/poetic-ingredients-in-the-mix/>

<https://www.lksnorth.nhs.uk/blog/posts/anyone-can-write-poetry-and-it-doesn-t-have-to-rhyme/>

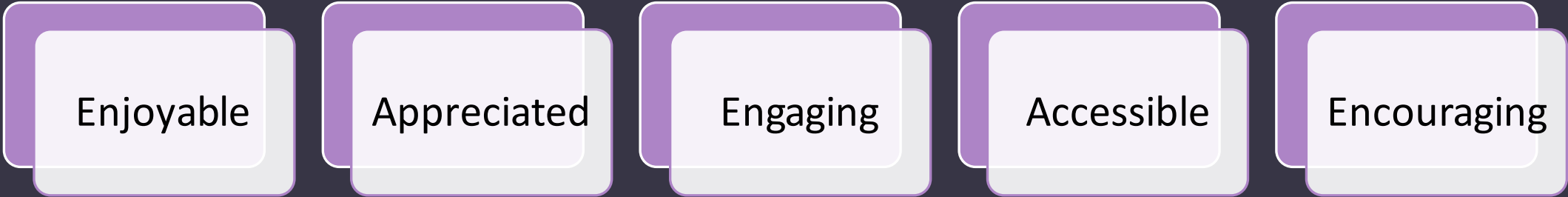
Enjoyable

Appreciated

Engaging

Accessible

Encouraging



Thanks, a thousand times thanks

A posy of flowers

Terry's chocolate orange

A bottle of Scotch

CDs selectively shared

Marbles to roll and marvel

A postcard memento, date stamped and signed

A bouquet of flowers

As a thank you with nature's smile

A smile is a sentence in itself

A cascade of words in full bloom

Residual associations reallocated

A captured memory fluttering to fly free

Permission to backpack to playtime, push forward and connect

The oil of togetherness, water of life, the warm glow of creativity

A quiet smile of reassurance

For increasing my confidence

Group Poem

Thank you for listening to our presentation.

If you have any questions about our study, please ask.

You can contact us by the following:

Bethany.a.doyle@stu.mmu.ac.uk

Lorna.Dawson@gmmh.nhs.uk



Twitter: [betty_poet](https://twitter.com/betty_poet)

Website: www.bettydoylepoet.wordpress.com

Betty's debut poetry pamphlet, 'Girl Parts', out with Verve Poetry Press March 2022

WE ARE OPEN!

Manchester
Poetry
Library

Manchester Poetry Library

Martin Kratz– Programme Manager

M.Kratz@mmu.ac.uk

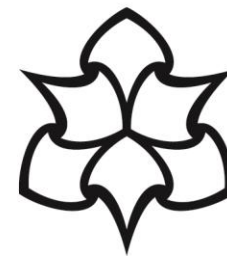
Manchester Poetry Library

Manchester Metropolitan University

8th December 2021

Manchester Poetry Library Strategy

- Create a world-leading Poetry Library collection in Manchester as an **exceptional resource for contemporary poetry**;
- Develop the Poetry Library as a **centre for excellence in poetry research**;
- **Enhance the student experience** at Manchester Metropolitan University for all students across faculties;
- **Promote understanding of the power of poetry** and bring the enjoyment of poetry to a wide local, regional, national and international public audience.



**Manchester
Metropolitan
University**

**Manchester
Poetry
Library**



The Collection

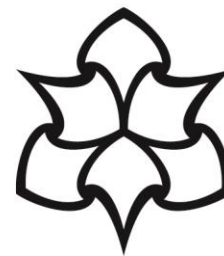
Print collection and recordings of contemporary poetry from around the world published since 1889.

Five particular areas of focus:

- Poetry in Recording
- Poetry in Community Languages
- Poetry and Collaboration
- Poetry and Place
- Poetry for Children

We do accept donations!

poetrylibrary@mmu.ac.uk

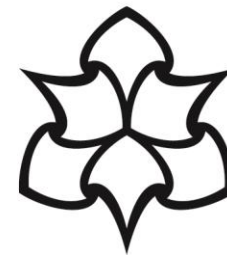
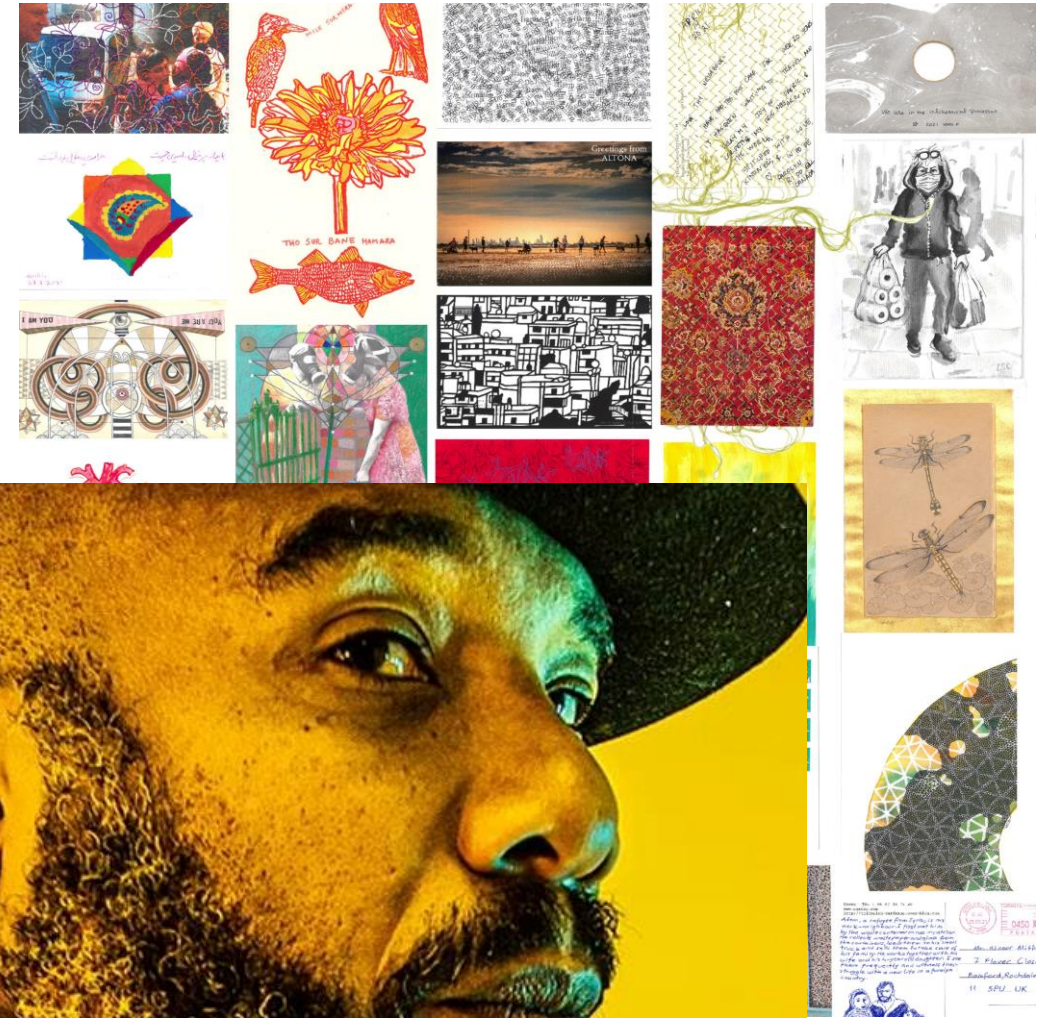


Manchester
Metropolitan
University

Manchester
Poetry
Library

Programme

- Year round programme of free, public events working with students, researchers, professionals, the public and partners such as Manchester City of Literature
- A programme of co-curation linked to our collection, such as our Chinese poetry collection curated by [Jennifer Lee Tsai](#)
- In person events such as Anthony Joseph and Manchester Poetry Library....an introduction to the MPL vinyl collection
- Online events such as [Knowing the Self: Diaspora and Identity through Arabic poetry](#)
- [Three main exhibitions a year](#) in the library space, as well as a series of mini exhibitions and curated book displays



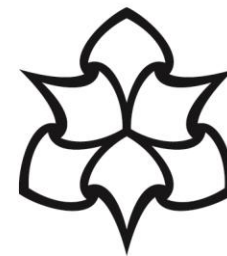
Manchester
Metropolitan
University

Manchester
Poetry
Library

Learning Programme

Aims to develop new skills and experience through inspiring poetry workshops, events and projects in collaboration with schools and community organisations, reaching people of all ages. Children (12 and under), Young People (13-17) and Adults: <https://www.mmu.ac.uk/poetrylibrary/discover-and-learn/learning-programme/>

- Year round programme of public events celebrating children's poets and illustrators
- Practical resources that support adults and children to read, share and respond creatively
- Themed poetry activities for families, schools and young people
- Exhibitions and showcases celebrating poetry by young people as well as for them.



**Manchester
Metropolitan
University**

**Manchester
Poetry
Library**

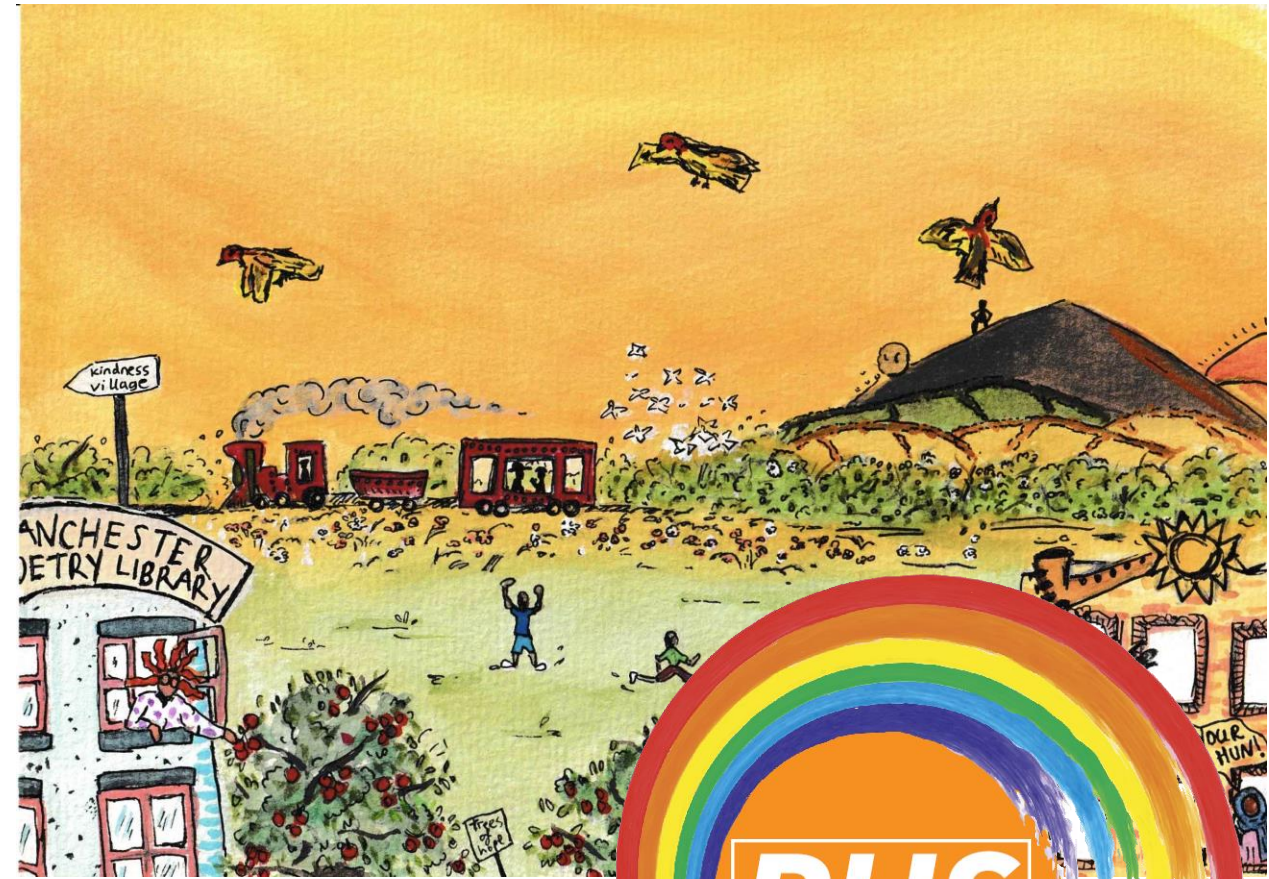
Poetry and Health

Research: Poetry Anxiety and NHS
Health Librarianship

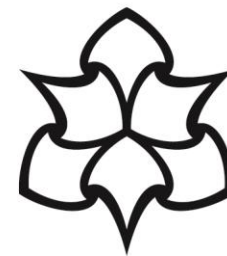
[WRITE Where We Are NOW](#) public
poetry archive during the pandemic

[Poetry Health Service](#) collaborative
twitter [poem](#)

[Caring Words](#): Poetry course for Health
Professionals



Illustrations by Nurun Nahar

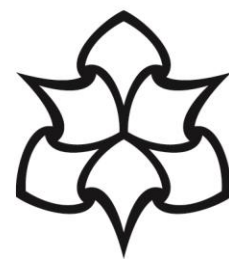


**Manchester
Metropolitan
University**

**Manchester
Poetry
Library**



‘The Key’ by Imtiaz Dharker written to inaugurate
the opening of Manchester Poetry Library



**Manchester
Metropolitan
University**

**Manchester
Poetry
Library**



Martin Kratz
M.Kratz@mmu.ac.uk

Newsletter
<https://www.mmu.ac.uk/poetrylibrary/contact/join-our-mailing-list/>
Twitter @McrPoetryLib
Instagram @McrPoetryLibrary



Break

Rejoin us at 14:30 for awards and close



Awards and close

Announcing the winners

